

Q300[®] SERIES

Compact in size. BIG on performance.



Q300 M Mini Kids



Q300 M Mini Teens



Q300 M Mini with SEDEO LITE



Q300 M Mini with SEDEO PRO

THE POWER OF QUICKIE

NEW QUICKIE Q-SERIES

A complete power range from basic mobility to complex rehab.
Whatever you need - without compromise.

CLINICAL NEED



Q50 & Q50 Carbon

SEATING
SLING
BASIC

BASES
RWD



Q100

SEATING
SLING SEAT

BASES
RWD



Q200

SEATING
SLING SEAT

BASES
RWD



Q300

SEATING
SEDEO PRO
SEDEO LITE
KIDS SEAT
TEENS SEAT

BASES
MWD
RWD



Q400

SEATING
SEDEO PRO
SEDEO LITE

BASES
MWD
FWD
RWD



Q500

SEATING
SEDEO PRO
SEDEO LITE

BASES
MWD
FWD
RWD



Q700

SEATING
SEDEO PRO
SEDEO PRO ADV.
SEDEO PRO for HD

BASES
MWD
FWD
RWD



Q700-UP

SEATING
SEDEO PRO ADVANCED

BASES
MWD
FWD

□ RWD: Rear-Wheel Drive □ MWD: Mid-Wheel Drive □ FWD: Front-Wheel Drive

Not all seats can be combined with all bases. Please refer to the order form for possible seat/base combinations.

BASE PERFORMANCE

GO WHERE OTHER POWERCHAIRS CAN'T WITH THE Q300 M MINI.

Ultra-slim at just **520 mm**, the Q300 M Mini is one of the narrowest TRUE mid-wheel drive powerchair. Born for small spaces and tight corners, its turning circle of just **1120 mm** ensures not only can you go where others can't, you can turn around too!

Just as agile outdoors, its patented all-wheel suspension will keep you safe and stable at all times. Tackling 7 cm kerbs? It's a breeze with 35.5 cm drive-wheels. Going off-path? The super-strong 4-pole motors power through where others turn back. And with energy-efficient motors squeezing up to **36 km** from 56 Ah batteries, you won't be turning back anytime soon.

Available with FOUR different seating systems - SEDEO LITE (p.16), SEDEO PRO (p.17), KIDS SEAT (p.20) and TEENS SEAT (p.21) - combines the Q300 M Mini a performance-proven base with seating systems dedicated to the clinical needs of different age groups and clinical needs. And with plenty of powered options, it's a combination that's never been experienced in this category of powerchair before.

You can even accessorise all areas too! With custom shroud designs and accent colours, the Q300 M Mini is the perfect powerchair to paint your personality over.

Got your attention? Okay, let's take you through the details.



Scan the QR code with your phone's camera to watch video.



COMPACT SPACE? MEET THE ULTRA-SLIM BASE!

Fed up of being told where you can't go? The Q300 M Mini's ultra-compact 520 mm base is so ridiculously narrow, it'll go where others can't.

520 mm

1120 mm



ULTRA-COMPACT 1120 MM TURNING CIRCLE

Thanks to its TRUE mid-wheel drive technology, the Q300 M Mini turns on the spot for an ultra-small turning circle of just **1120 mm**. In comparison, RWD and FWD powerchairs need to 'swing' around on its front or rear drive wheels, so the turning circle is wider.



WHAT IS TRUE MID-WHEEL DRIVE TECHNOLOGY?

It's when the powerchair's drive wheels are aligned central to its length. If positioned towards the front or rear, the turning circle is wider (as there's more of the powerchair to swing around). There's also less weight on the drive wheel, reducing traction. The Q300 M Mini provides the most-compact turning circle with increased traction thanks to its TRUE mid-wheel drive design.

NARROW 300 MM (12") DRIVE WHEELS

Looking for the tightest indoor manoeuvrability? These standard drive wheels provide you with the most compact 520 mm base width.





FLIP-BACK ARMRESTS

Struggling with transferring in and out of your Q300 M Mini? Just flip the armrests backwards for extra space. They're also available as removable or reclining versions too.



410 mm

LOW SEAT HEIGHT

Fit comfortably under tables or when driving into your wheelchair adapted vehicle with the Q300 M Mini's ultra-low seat-to-floor height, starting from 410 mm with fixed tilt and 430 mm with powered lift/tilt.

SHORT 1060 MM BASE

At just **1060 mm** in length (with centre-mount legrest), the Q300 M Mini conveniently fits in-and-out of the smallest lifts and tight spaces with ease. It's also light enough (from **103 kg**) to be compatible with most floor lifts too.



1060 mm

Simply swing the controller sideways and get even closer.



GET CLOSER WITH THE CENTRE-MOUNT LEGREST

Looking for the tightest turn? The optional manual or powered (pictured) centre-mount eliminates the need for traditional legrests at the front of your powerchair. By sitting with your knees bent at 90°, not only can you turn tighter, but you can get closer to objects like tables too.

THE OUT-PERFORMER

Experience a TRUE compact powerchair with TRULY sensational outdoor performance. Narrow and nimble in a crowded city and packing BIG powerchair outdoor performance, it's streets ahead of the competition.



ANTI-PITCH TECHNOLOGY

Traditionally when a powerchair comes to a halt on a slope, the stopping motion will jolt you forwards. That's a problem we've eliminated with Anti-Pitch technology - so you're kept **safe** and **stable** in your seat.



ALL-WHEEL INDEPENDENT SUSPENSION

Our PATENTED all-wheel independent suspension ensures all six wheels remain on the ground whilst climbing and transitioning obstacles. Any shocks or bumps are absorbed by the wheel's suspension, providing a soft and smooth ride.



THERE'S NO NEED TO RUSH BACK

Powered by punchy 56 Ah batteries, the Q300 M Mini takes you anywhere you want to go with an impressive range of up to **36 km**.



PUSH BOUNDARIES WITH 355 MM (14") DRIVE WHEELS

Get the very best traction, stability and obstacle tackling with these aggressive outdoor wheels. Plus, they keep your Q300 M Mini slim at just **570 mm**.



FENDER LIGHTS

Now available on the Q300 M Mini base: the subtle integrated lights illuminate the way and provide more visibility.



THE LEAN, KERB-CLIMBING MACHINE.

Don't you hate it when there's no drop-kerb in sight? Thankfully the Q300 M Mini with its **300 mm (12")** drive wheels can handle kerbs of up to **50 mm** so there's no need to take the long way round. Need to handle something a bit trickier? Upgrade to **355 mm (14")** drive wheels and tackle kerbs of up to **70 mm**.



QUICKIE 4-POLE MOTORS

Our 40+ years of experience has developed longer-lasting, highly efficient motors with the performance, drivability and range that others just can't match.



Scan the QR code with your phone's camera and book your free test-drive today.

PRESERVE POWER

Like a car on the motorway versus in the city, our motors are designed for optimal driving performance so you get the power when you need it (and preserve it when you don't).

POWER BOOST

Tricky incline? Our controller and motors work together to provide you with an extra 10 seconds of power boost when you need it the most.

REDUCE THERMAL ROLLBACK

The larger motor cooling fins help heat to escape easier, reducing thermal rollback so you maintain a constant speed - even on slopes or uneven surfaces!

DESIGNED TO LAST

Unlike other powerchairs, our gears are polished metal (not plastic). Providing lower noise and higher efficiency, they're bred for tough conditions.

YOUR TRAVELLING COMPANION

Going on public transport? The Q300 M Mini's ultra-narrow width and tight turning circle will help you negotiate even the busiest of journeys.

PERFECT FOR HOISTING

Weighing from just **103 kg**, the Q300 M Mini can be easily hoisted in and out of your vehicle. A real space saver, optional extras such as the fold-down backrest, swing-away legrests or single post removable armrests provide an even tighter, compact package for when space is at a premium.



RETAIN TRACTION ON RAMP

Traction may be lost on ramps as the front castors force the drive wheel off the ground. The Q300 M Mini's front castor arms move independently from the base, so the drive wheel retains its traction.



WHEELCHAIR ADAPTED VEHICLES

With its ultra-low 410 mm seat height, the Q300 M Mini's easily fits under the steering wheel of your vehicle with plenty of head room to spare. Ultra-narrow, it won't catch on the tracks or side panels of your vehicle either.

POWER-UP YOUR Q300 M MINI

The Q300 M Mini doesn't just have **BIG** chair performance, it has the **BIG** chair features too! From powered tilt, lift, recline or elevating legrests, it's loaded with the options to meet your clinical and lifestyle needs.



POWERED ELEVATING AND ARTICULATING LEGRESTS

By raising and lowering your legs, these legrests help to reduce swelling and improve circulation. By adjusting in length, your seated position is kept constant, preventing unwanted pelvic movement. The centre-mount version (pictured) also provides greater space at the front of your chair for manoeuvring and transfers.

TILT-IN-SPACE

Adjust your seated position throughout the day with up to **50°** of powered tilt. Helping with pressure relief by redistributing your weight from the cushion to the backrest, maintain a comfortable seated position with reduced muscular effort.



300 mm

POWERED LIFT & TILT

Reach new heights with **300 mm** of seat lift and get to every-day objects that would otherwise be out of grasp. You can also transfer easier thanks to being in a higher position to stand from. Plus, with up to **50°** of tilt, you can sit back and enjoy greater relaxation and pressure distribution too.

POWERED RECLINE BACK

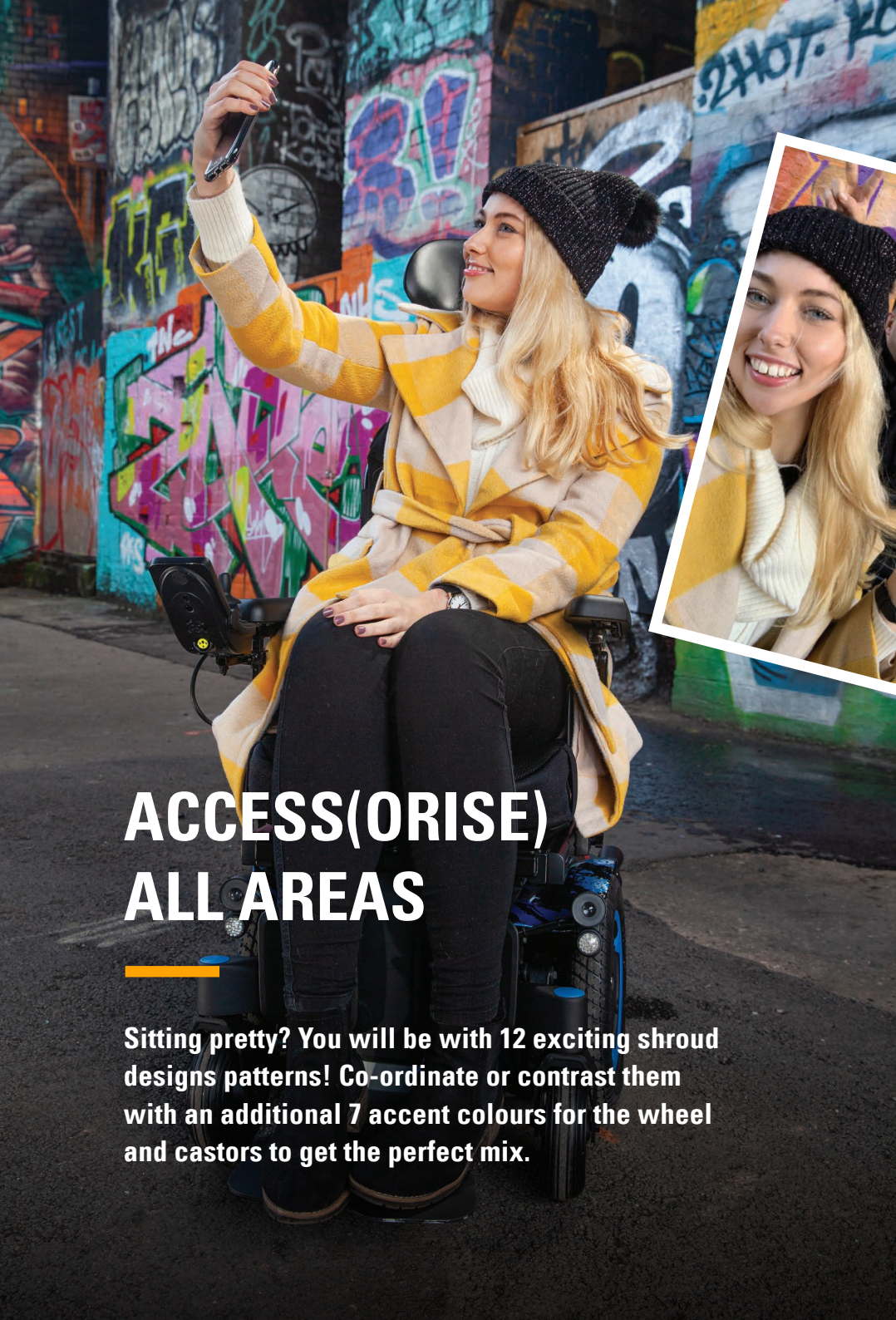
Similar to how a seat would recline in a car, the powered recline back helps to redistribute your weight across more of the backrest whilst maintaining a constant seat angle.



C-Me

DRIVE ELEVATED WITH SUSPENSION AT 4.5 KM/H

C-Me is all about seeing you, and just you. Elevate up to **300 mm** whilst travelling **4.5 km/h** and move shoulder-to-shoulder with everyone around you. Unlike others, our **suspension doesn't lock-out** either, so you get a smooth and comfortable ride from start to finish. You can even lift or descend at the touch of a button with no need to stop while transitioning either!



Colours shown within this brochure may vary from the actual colours, due to the limitations by the printing process used.

ACCESS(ORISE) ALL AREAS

Sitting pretty? You will be with 12 exciting shroud designs patterns! Co-ordinate or contrast them with an additional 7 accent colours for the wheel and castors to get the perfect mix.



Floral White

Carbon Black



Flame Asteroid Grey

Flame Sharp Blue

Flame Hot Red

Flame Pure White



Grey Burst

Pink Burst

Purple Burst

Blue Burst

Red Burst

Pure White Burst

SHROUD:



ACCENT:





UNIVERSAL HEADREST

The headrest mount on **Adult**, **Teens** and **Kids** is compatible with SEDEO and WHITMYER headrests, which help to address a range of needs from basic support to multiple-point control.

THERE'S A Q300 M MINI FOR ALL AGES!

The Q300 M Mini combines its high-performance base with dedicated **Adult**, **Teens** and **Kids** seating systems that cater specifically to your clinical needs. Now everybody can enjoy the Q300 M Mini!

SEDEO LITE SEATING

Combining an adjustable and configurable frame with a broad range of support and positioning options, the SEDEO LITE is ideal for clients with mild to moderate support needs.

FLIP-BACK ARMRESTS

Just flip these armrests backwards for greater space when transferring in-and-out of your chair. Also available as a removable or reclining version.

LENGTH COMPENSATING, SWING-AWAY LEGRESTS

Easily adjustable in length to achieve the best possible fit, these legrests swing-away for easier transfers in-and-out of your powerchair. Also available as a powered elevating and centre-mount.

FOR CLIENTS
WITH MILD TO
MODERATE
POSTURAL NEEDS

SLING BACK WITH COMFORT CUSHION

The standard, height adjustable back provides a breathable, soft cover with 4 tension-adjustable straps to cater for a variety of postures. Upgrade to a SEDEO or JAY back and cushion to increase comfort and positioning.

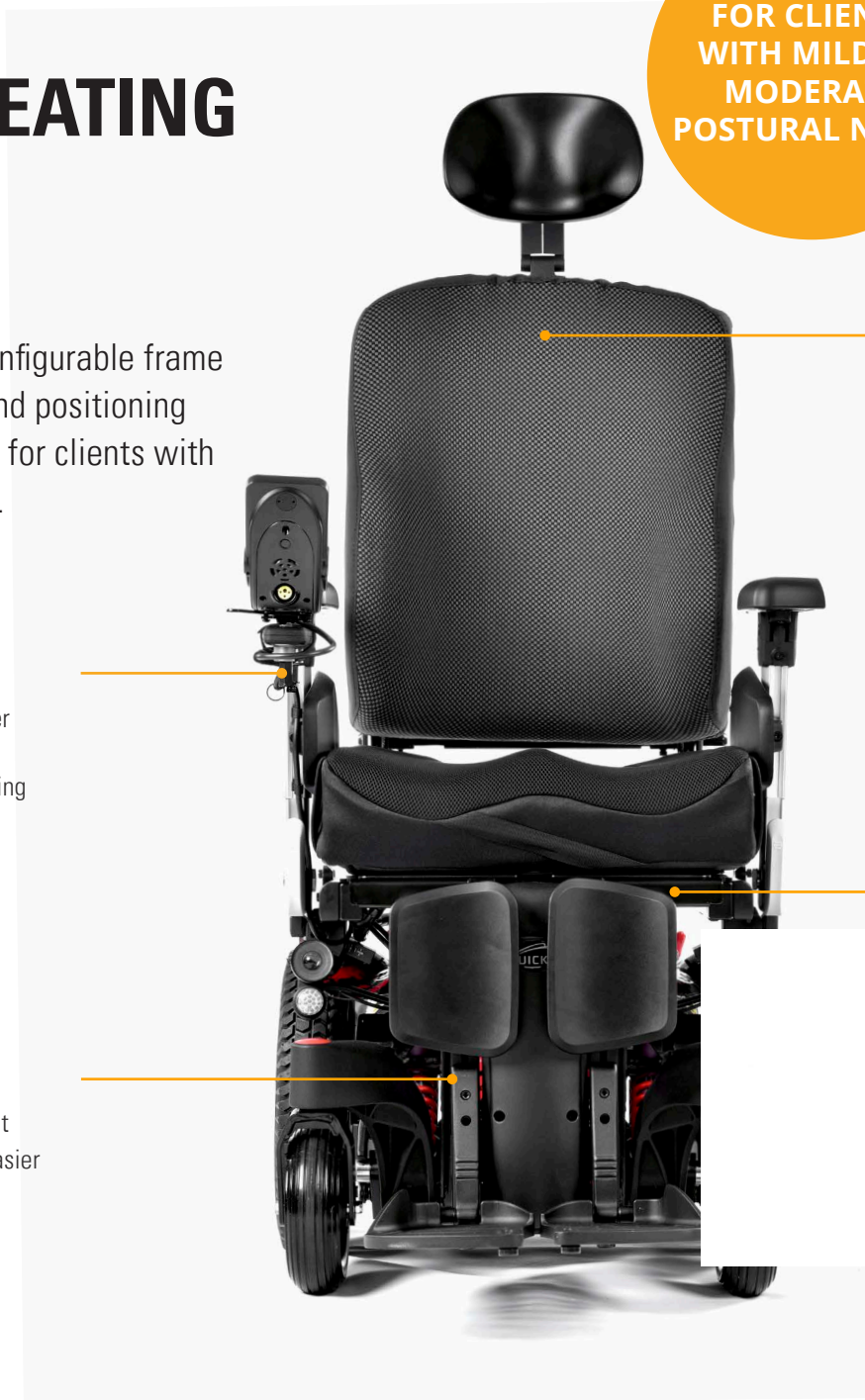


Scan the QR code with your phone's camera to learn more.



SEAT RAIL TECHNOLOGY

The integrated seat rail offers many mounting options for positioning elements like lateral thoracic, thigh and knee supports. Simply attach and slide into position!



SEDEO PRO SEATING

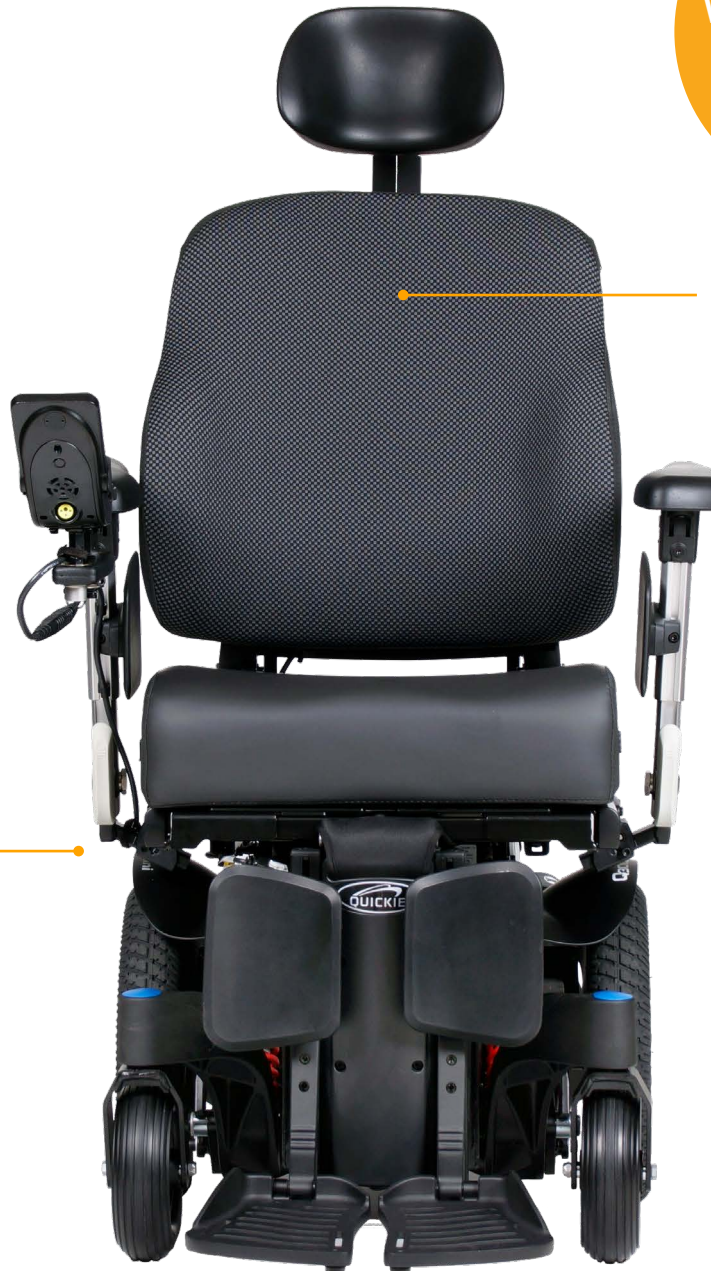
FOR CLIENTS
WITH MODERATE
TO COMPLEX
CLINICAL NEEDS

High-end fully adjustable and configurable seating frame with broadest range of options and positioning accessories: SEDEO PRO offers great flexibility to adapt to the individual user who have degenerative diseases or need to safeguard against occurrence of skeletal deformities with moderate to complex needs.



50° POWERED TILT EVEN WHEN COMBINED WITH SEAT ELEVATION

Allows to assess areas that were out of reach while helping to reduce pressure injuries, assisting in maintaining proper posture, and ensuring the rider is comfortable.



POWER RECLINE 90°/150°

This aids in breathing, and prevents pressure injuries and digestive complications. This helps to maintain a good-seated posture when in reclining position and returning from recline.

ANTI-SHEAR BACKREST

100 mm of Anti-Shear movement makes sure that there is no sliding between the user and the cushion, giving a comfortable recline experience.

RELAX-POSITION (COMING SOON)

Allows to adjust Anti-Shear recline and tilt at the same time and keeps headrest in place during recline.



Scan the QR code with
your phone's camera to
learn more.

SEDEO PRO FLEXIBLE BACK CUSHION

Upgrade to this unique back cushion that effortlessly combines adjustable full rear back and side trunk support with the highest level of immersion that has to be felt to be believed!

SHAPES TO YOUR SPINE

Instead of a solid base, the flexible back cushion has 8 adjustable straps that wrap around your back. Where other backrests make limited contact with the spine, the flexible back cushion's layer of soft foam contours to you, providing complete contact, comfort and stability.

It's so immersive that even those with moderate-to-severe **kyphotic postures** can sit much more upright without any sacrifice to comfort.



Scan the QR code with your phone's camera to watch video.

WRAPS AROUND AND MOULDS TO YOUR BODY

As you sit back, the laterals 'hug' your sides, allowing the immersive foam to mould to your anatomical curves. Because more of you is in contact with the support, pressure is distributed better, preventing discomfort or increased pressure.

Trunk stability and alignment are provided by the lateral side supports. Integrated inside of the backrest for a smooth and attractive appearance, they also won't move or slip over time. Independently adjustable, these supports can be:

1

Positioned inwards or outwards



2

Moved up or down



3

Locked to support postures like scoliosis or loosened for greater freedom



zippie

Q300 M MINI kids

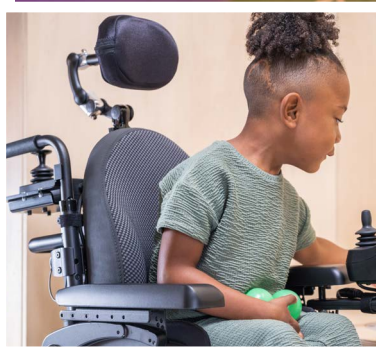
KIDS ADJUSTABLE SEATING SYSTEM

Children grow so fast, and so can their Q300 M Mini Kids! This seating system can grow in width (**280 - 400 mm**) and depth (**260 - 400 mm**), so there's no big adjustment to moving to a new powerchair as your child gets older - just lots of small ones!



SEDEO LITE BACKREST

We've designed this backrest just for kids. Contoured for comfort, the integrated laterals provide constant trunk stability. As they're inside the backrest, the laterals won't move or slip over time - great for kids on the move! And, eight tension adjustable straps provide individualised support wherever kids go.



ADDITIONAL SAFETY FEATURE

This handy device immediately stop your child's powerchair remotely if they're getting a little too far away for comfort.



Scan the QR code with
your phone's camera to
watch video.



Q300 M MINI TEENS

TEENS ADJUSTABLE SEATING SYSTEM

Packed with all the growth adjustability and features of the Kids version, the Q300 M Mini Teens stretches to an extended seat depth range of **360 - 500 mm**. Ideal for growing teenagers who require a narrow seat width, but greater adjustments to seat depth over time.



CAPSULATED JOYSTICK

This (optional) joystick mount has 3 locking positions. It can be mounted mid-line for children who have limited hand mobility and can also swing inwards/outwards to help getting closer to tables.



Z-FINITY FOOTPLATES

Adjustable between 160 mm above the seat pan to 480 mm below, these footplates provide the support growing children need. Infinitely adjustable along its rotational arc, multiple angles and placement options for positioning the feet, ankles, and knees can be achieved.



Connect to your world*

Seamlessly take control of your environment using the integrated Bluetooth and i-device functionality. Control your TV, phone and other home entertainment systems simply through your joystick.



Scan the QR code with your phone's camera to watch video..



*Only with R-Net

JAY & WHITMYER

POSITIONING OPTIONS

A wide range of WHITMYER headrests and JAY cushions and backs are available with the SEDEO LITE, SEDEO PRO and also with the Kids and Teens seating systems to meet every user's clinical needs and ensure we offer the best seating possible.



WHITMYER HEADRESTS

Created to address a range of user needs from basic support to multiple-point control. WHITMYER headrests come in a variety of pad shapes and sizes for superior head positioning and comfort.

JAY CUSHIONS & BACKS

Designed for pelvic stability, skin protection and comfort, JAY cushions and backs are low maintenance, highly customisable and are available in a large variety to meet your needs.



R-NET

ADVANCED JOYSTICK

Every Q300 M Mini comes with the R-Net advanced joystick as standard. A large, easy-to-read HD display and simple to control paddle switches allow for intuitive operation.

IR CONNECTIVITY

Seamlessly take control of your environment using the integrated Infrared functionality. Control your home entertainment system, TVs, DVDs, docking stations and other home entertainment systems simply through your joystick.

BLUETOOTH CONNECTIVITY

Control your phone, computer, tablet and any other Bluetooth and i-devices with this useful optional extra. Connect and control up to four devices.

QUICKIE'S PATENTED ASSIGNABLE BUTTONS

Change the function on any button on your joystick to any command you desire, thanks to QUICKIE's **PATENTED** assignable buttons. You can also assign a second (long press) function to buttons, giving you quicker, simpler and smoother access to functions you commonly use without having to use your joystick.



SWITCH-IT

INNOVATIVE CONTROLS

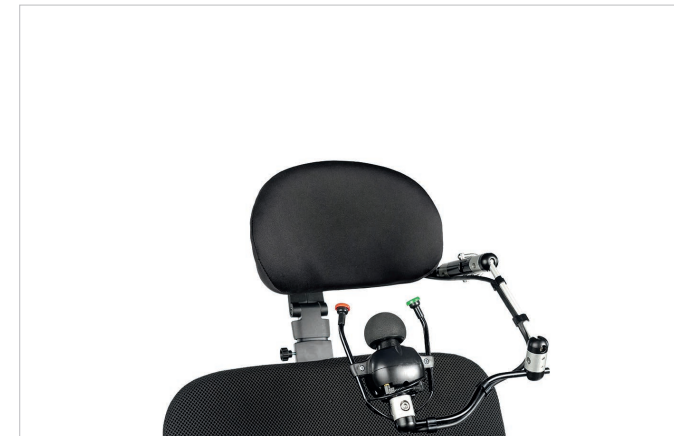
Conveniently access your 5 programmable positions with the Ctrl+5 – a perfect combination with Memory Seating. It allows you to go straight to the function you need at the touch of a button.

ALTERNATIVE DRIVE CONTROLS

If driving with a traditional joystick is not the best option, alternative drive controls allow you to fully experience your chair's driving capabilities and benefits.



Scan the QR code with
your phone's camera to
learn more.



LINK-IT

MOUNTING SYSTEM

Need to use additional switches or special controls? No problem, easily connect them using the universal Link-It mounting system.

By using a combination of available modules and rods, you can create an endless number of combinations to accommodate what you need. Not only is it easy to position, Link-It also ensures the minimalistic, clean design of your wheelchair isn't compromised by additional controls. So whether it's an extra controller on the armrest, a push button on the backrest or a switch on the headrest, just link it.



TECHNICAL SPECIFICATIONS



SEATING SPECIFICATIONS



**Q300 M Mini with
SEDEO LITE**



**Q300 M Mini with
SEDEO PRO**

Dimensions

Seat width	385 - 510 mm	380 - 560 mm
Seat depth	410 - 560 mm	400 - 560 mm
Seat height	410 - 490 mm	410 - 490 mm
Fixed angle tilt	0 - 9°	0 - 9°
Backrest height	460 - 510 mm	530 - 720 mm
Backrest angle	85 - 120°	90° - 150°
Maximum user weight	136 kg	136 kg

Features

Seating system	SEDEO LITE	SEDEO PRO
SEDEO PRO Flexible Back Cushion	●	●
SEDEO LITE Adult Back	●	-
SEDEO LITE Kids Back	-	-
Powered recline back	●	●
Powered elevating & articulating legrests	●	●
Remote stop switch	●	-
C-Me	●	●
Z-Finity footrests	-	-

● Available



Q300 M Mini Teens



Q300 M Mini Kids

300 - 400 mm	280 - 400 mm
360 - 500 mm	260 - 400 mm
410 - 490 mm	410 - 490 mm
0 - 9°	0 - 9°
435 - 535 mm	380 - 485 mm
86 - 106°	86 - 120°
120 kg	75 kg
Teens seat	Kids seat
-	-
-	-
●	●
-	●
●	-
●	●
●	●
●	●

BASE SPECIFICATIONS

Dimensions	
Total width	From 520 mm
Total length (with centre-mount)	From 1060 mm
Turning circle	From 1120 mm
Maximum safe slope	8°
Maximum kerb climbing	50 mm (with 12" drive wheels) 60 mm (with 13" drive wheels) 70 mm (with 14" drive wheels)
Maximum range (ISO 7176-4)	Up to 25 km (with 41 Ah batteries) Up to 36 km (with 56 Ah batteries)
Product weight (with batteries)	From 103 kg
Drive wheels	12" / 13" / 14"
Maximum speed	6 km/h / 8 km/h / 10 km/h
Battery size	41 Ah / 50 Ah / 56 Ah
Electronics	VR2, R-NET
Transport without user	Fix the wheelchair safe in the vehicle (e.g. car or plane).
Intended use and environment	For people with limited mobility, indoor and outdoor use. Wheelchair type class B



LOOKING FOR SOMETHING UNIQUE?

BUILT-4-ME has created thousands of bespoke powerchairs. When you want to break the mould, we'll help you create a truly one-of-a-kind powerchair. Find out more at:

www.sunrisemedical.eu/built4me

Now that you've read all about the QUICKIE Q300 M Mini, we think it's about time for you to experience it for yourself.



Scan the QR code with your phone's camera and book your free test-drive today.



Sunrise Medical GmbH

Kahlbachring 2-4

69254 Malsch/HD

Tel.: +49 (0) 72 53 / 9 80-0

Fax: +49 (0) 72 53 / 9 80-222

E-Mail: international@sunrisemedical.de

www.SunriseMedical.eu

Sunrise Medical cares about your safety. Please read your owner's manual for safe operating instructions and maintenance guidelines.

In line with our policy of continual product improvement, Sunrise Medical reserves the right to make changes at any time, and without notice. For the latest information, please visit www.sunrisemedical.co.uk

If you are visually impaired, this document can be viewed in PDF format at www.SunriseMedical.eu

